

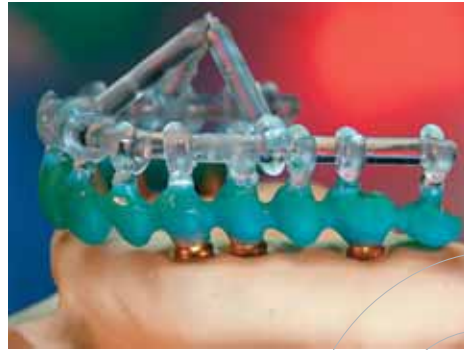
# dental lab products

## Tech

### **CORNER** APPLYING NEW TECHNOLOGIES LIGHT-CURED WAX SYSTEM



Metacon highly stable and precise light-cured substructures for bridges and full cast crowns.



The stable light-cured implant bridge understructure is in no danger of distortion caused by removal.

#### Features

- Large-capacity internal space even accommodates a full-size articulator
- Technically advanced cooling system keeps polymerization temperature at maximum +5°C above ambient temperature
- Multi-coated metal housing with CAD/CAM milled aluminum components
- LED display for function and control of curing lamps
- Suitable for crown and bridgework; partial frameworks; complicated, implant-retained restorations; pressable ceramics; and Cercon
- Hardened acrylic grinds easily with carbide burs
- Clean burnout without expansion in the ring during pre-heating

## From wax to acrylic

Revolutionary light-cure technology converts wax into hard yet flexible acrylic

*Information provided by Dentation LLC.*

Primotec's **Metacon Light Cured Wax System** converts wax into an acrylic that is strong enough not to distort or break, yet is flexible enough to lift a partial with clasps off the master model. The Metacon material is handled just like conventional modeling wax; however, after the waxup is complete, it is cured in the thermo-con-

trolled Metalight QX1 light-curing unit. The flexibility and memory of the cured wax material allow technicians to achieve precision prosthetic appliances. The cured material can be trimmed with a carbide bur before investing. It burns out cleanly and completely and does not expand in the ring during preheating.



**Dentation LLC**

www.primogroup.de • 212-929-8324



An upper partial frame, light-cured, finished, and ready for investing.

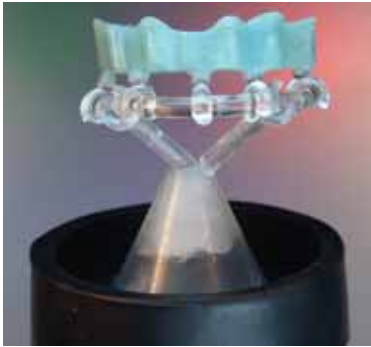


Two lower partials in one ring, saving investment material and time.

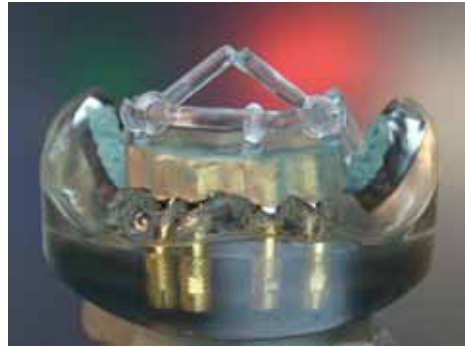


A bridge connection for Captek or Galvano copings.

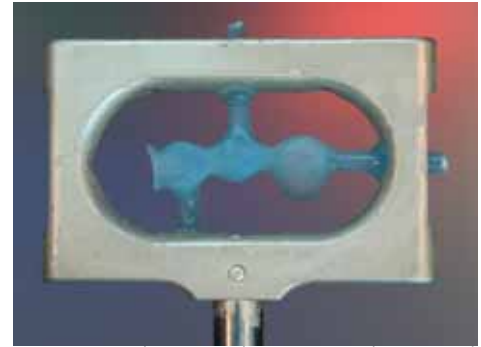
For further product and distributor information, please see other side.



Implant infrastructure already cured, milled and polished (sprued with primoclick)



Metacon implant superstructure of the same case



Ready for scanning - cured Metacon bridge in Cercon scanning frame

Primotec's Metacon system can be used in constructing numerous prosthetic appliances and new technologies such as Captek InConnect, pressables, or Cercon.



© Reprinted from DENTAL LAB PRODUCTS, August 2006 AN ADVANSTAR PUBLICATION Printed in U.S.A.



# dentation

Dentation

25 Sylvan Road S, Ste N

Westport, CT 06880

(866) 643 3129

Fax: (212) 929-7444

info@dentation.net • www.dentation.net