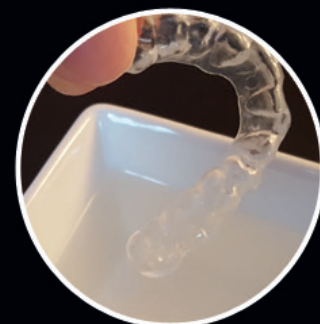
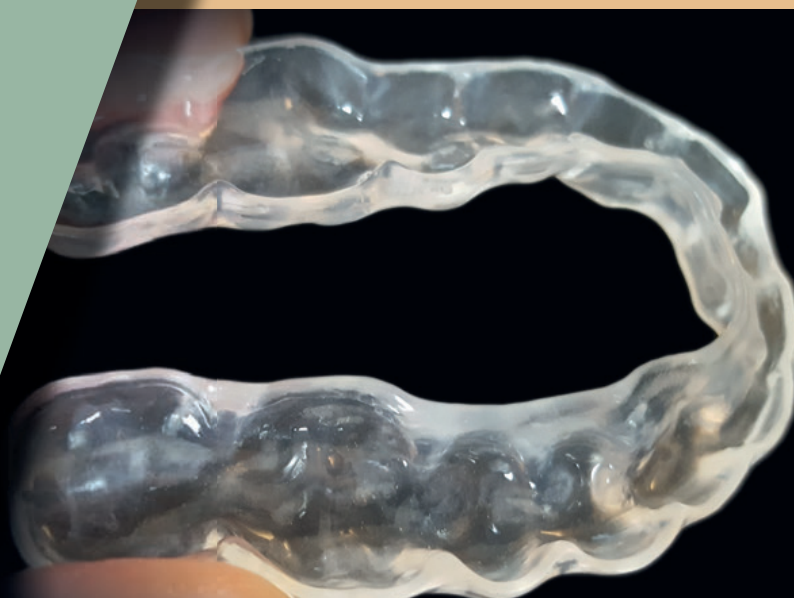


Primotec completes the range of PREMIOtemp PMMA milling blanks as part of the primotec DIGITAL products program.

MISSION COMPLETED!



CAD/CAM technology continues to cause a lot of excitement, and have introduced many materials and forms of treatment which bring a real added value. One of these winners is certainly the CAD/CAM-supported production of temporaries. For these appropriate materials are required. In the Primotec digital program there are numerous PMMA blanks whose indication of high-end temporary restorations, range from simple provisional dentures to splints with a thermal effect.

Provisional measures are and remain one of the topics that are becoming increasingly important in everyday dental practice. Opinions on how a provisional should look and function often differ widely. From simple and practical, as a purely temporary measure for the protection of the prepared tooth, to aesthetically and functionally perfect, as a quasi-temporal(interim) image of the expected definitive case.

To take these different views into account, the PREMIOtemp range has been extended in every respect.

The aesthetic spearhead in the PREMIOtemp portfolio is still the MULTI PMMA Blank (Fig.1). It is now available in all common shapes with a diameter of 98.5 mm and

95 mm respectively, as well as in D-shape. In addition to ALL VITA classic shades from A1 to D4, four BLEACH shades BL1, BL2, BL3 and BL4 are also available (Fig.2). Various blank heights up to 30 mm complete the product range.

These high-end PREMIOtemp MULTI blanks are often used as temporary material for major restorations, large implant cases and generally in the extended anterior tooth area (Fig. 3 – 9). In the present case, the patient was very concerned that she would have to walk around with "even uglier front teeth" during the treatment phase and might not be able to bite properly. She was also unsure whether the definitive anterior crowns would meet her expectations. In such cases, the temporary then no longer



Fig. 1 — Homogeneous multicolor layering with no separation between the layers



Fig. 2 — Not yet commonplace in Europe, but always widespread: the patient's desire for natural looking white or even bleached restorations.

serves only the protection of the prepared tooth but is a tried and tested means to define together with the patient the aesthetic as well as functional treatment goal via these same provisionals. The patient therefore sees from the beginning what she will look like after the treatment has been completed, feels good even in the provisional phase and is looking forward to the final restoration. The uncertainty at the day of cementation - oh God, what am I going to look like - no longer exists.

But high-end provisionals are not always desired, necessary, or financially viable.

So, if it should only be simple and practical, the more budget priced PREMIOtemp MONO milling blanks (Fig.



Fig. 3



Fig. 4

Figs. 3 - 4 — Four temporary upper anterior crowns from 7 - 10, milled from PREMIOtemp MULTI with at least five gradient layers (incisal to cervical)

10), also available in all VITA shades as well as in BL1, BL2, BL3 and BL4 and in all shapes and many heights, are the material of choice.

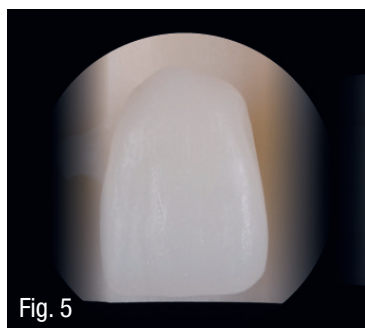


Fig. 5



Fig. 6

Figs. 5 - 6 — The degree of translucency in the incisal area of the restoration can be adjusted individually by adjusting the position of the temporaries in the vertical during nesting in the CAM software. The further up the case is placed in the disc, the more translucent the result becomes.



Fig. 7 — The PREMIOtemp MULTI temporaries offer a very good combination of color and translucency with natural fluorescence. Even with light shades, as in this case A1.



Fig. 8 — Front view of the provisional crowns in situ. Best esthetics thanks to the homogenic multicolor layering of the MULTI PMMA blank, without no separation between the layers.



Fig. 9 — With PREMIOtemp Multi, an attractive, natural smile of the patient is ensured even during the provisional phase.



Fig. 10 — Basic, but not bad: milled 3-unit bridge made of PREMIOtemp MONO



Fig. 11 — Available in heights of up to 30mm: PREMIOtemp MONO pink

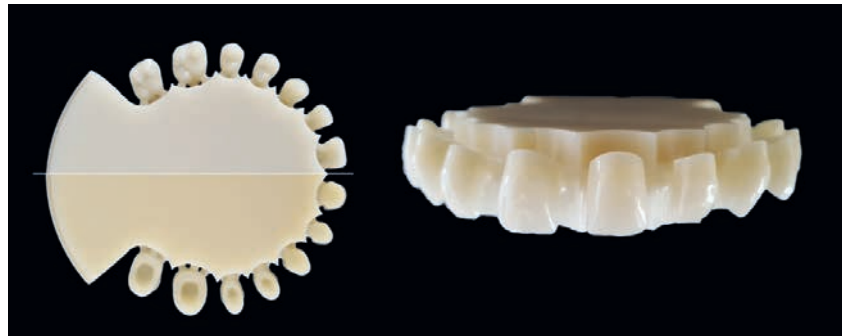


Fig. 12 — Individually milled denture teeth made of PREMIOtemp MULTI, tooth shade A1



Fig. 13 — For very simple, affordable solutions. Depending on how the STL was nested, the papillae or the tooth neck areas must still be stained manually after milling.



Fig. 14 — After heating, the PREMIOtemp CLEAR FLEX bite splint can even deform strongly due to the thermo effect without breaking.



PREMIOtemp MULTI PMMA

The **NEW** standard for milled temporaries

TEMPORARY ESTHETICS REDEFINED



Natural esthetics without compromise

- Long term temporary restorations
- Short term provisionals
- Temporary crowns, bridges and veneers
- Prototype and mock-ups for implant restorations
- Temporary screw retained abutments
- Individually milled interim denture teeth

PREMIOtemp crowns 6-11
By Cristian Petri

- Impressive esthetics due to 5 plus layers of color
- Homogenous multilayered without lines between layers
- Excellent combination of color and translucency with natural fluorescence
- Highly biocompatible
- Excelling milling and polishing properties
- High tensile strength
- Available in all VITA shades, plus bleach
- Heights up to 30mm, for all common milling machines
- Also available as monochromatic and clear PMMA blanks
- FDA 510k registered



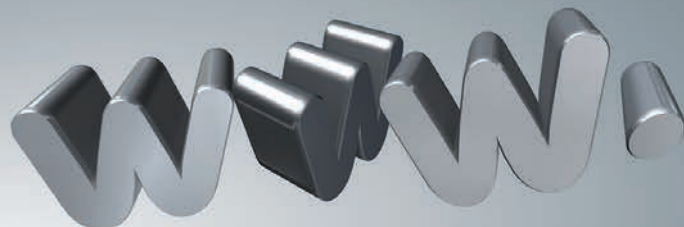
Tel. 866-643-3129

 **primotec**[®]
DIGITAL

www.primotecusa.com
info@primotecusa.com

LET US BUILD YOUR DENTAL WEBSITE

Our Dedicated Team Provides
ONE STOP SOLUTIONS
TO YOUR DIGITAL WORLD



- **Responsive Website Creation**
- **Website Maintenance**
- **Domain Registration and Hosting**
- **Web Page Banners**
- **Targeted Email Marketing***
- **Digital Reprints & Newsletters**
- **Customized Marketing Materials**

*CASL approved email lists

Call us Today!
1.866.581.8949 Ext. 201



www.palmerimediagroup.com




Fig. 15 — The CLEAR FLEX bite splint in the patient's mouth. Tension-free wearing comfort and precise fit thanks to the thermo effect.

New are the gingiva-colored, pink blanks for milling denture bases (Fig. 11). In combination with individually milled denture teeth made of PREMIOtemp MULTI, it is quite possible to produce considerably attractive full dentures (Fig. 12).

Also new in the range is a multi-layer milling blank made of pink and tooth colored PMMA for the production of temporary, travel or just very basic full dentures (Fig. 13).

However, PMMA milling discs are not only used in the field of temporary restorations, they are now also very often used to produce bite splints. Classic is the milled, transparent, hard bite splint. For this purpose, the PREMIOtemp CLEAR or MONO blanks are used (MONO, when the splint is to become tooth-colored). But again, this is only the simple, practical solution when it comes to bite splints.

Much more comfortable for the patient and more relaxed for the dentist and the laboratory are bite splints made of PREMIOtemp CLEAR FLEX. The so-called thermo effect of this innovative material creates a milled bite splint that adapts optimally and completely stress-free to the teeth, but at the same time keeps the defined occlusal contact points and guiding paths due to its optimized surface hardness (Figs. 14 and 15).

Conclusion: there are many useful applications for PMMA milling blanks in digital dental technology. Many are work-facilitating and/or quality-enhancing, but as in analog dental technology, the question is always what requirement one wants or needs to meet. For this reason, the expansion of the range in the primotec Digital program makes sense in order to offer all users the possibility to meet the requirements placed on them. And, although it may sound amazing, PREMIOtemp MULTI or MONO blanks in C and D shades are in demand more often than one thinks. 

For more information call primotec at 203-682-6429
Production and images of clinical work: **Cristian Petri**