

# QUICK MODELING DIRECTLY FROM THE SYRINGE

## metablue

light cured Metacon system modeling composite

metablue is a light cured modeling composite gel from the syringe,  
that burns out cleanly and completely and is aligned specifically  
to be used with the metacon light cured wax system.

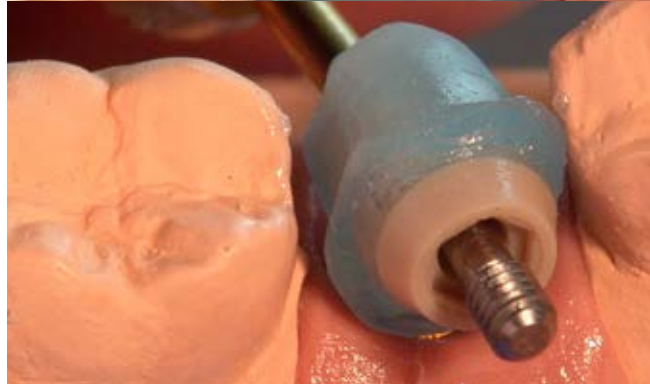
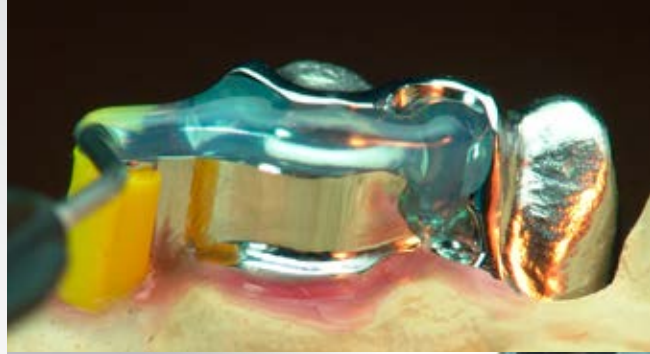
# QUICK MODELING DIRECTLY FROM THE SYRINGE

## uses

- individual implant abutments
- secondary parts of combined cases, such as telescopic or conus crowns, interlocks, RSS, millings, individual attachments, etc.
- tension free connection of Metacon implant bars, bridges or partial segments
- smoothing and/or sealing of ground Metacon surfaces
- fixing of retention beads on secondary telescopic or conus crowns
- easy attaching of the Metacon sprues to the modelled case

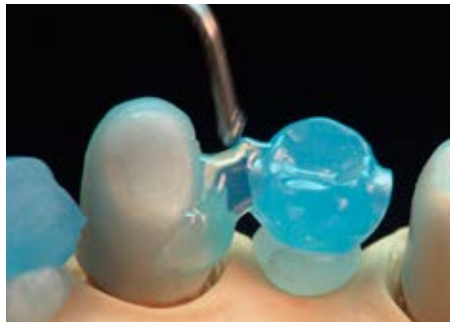
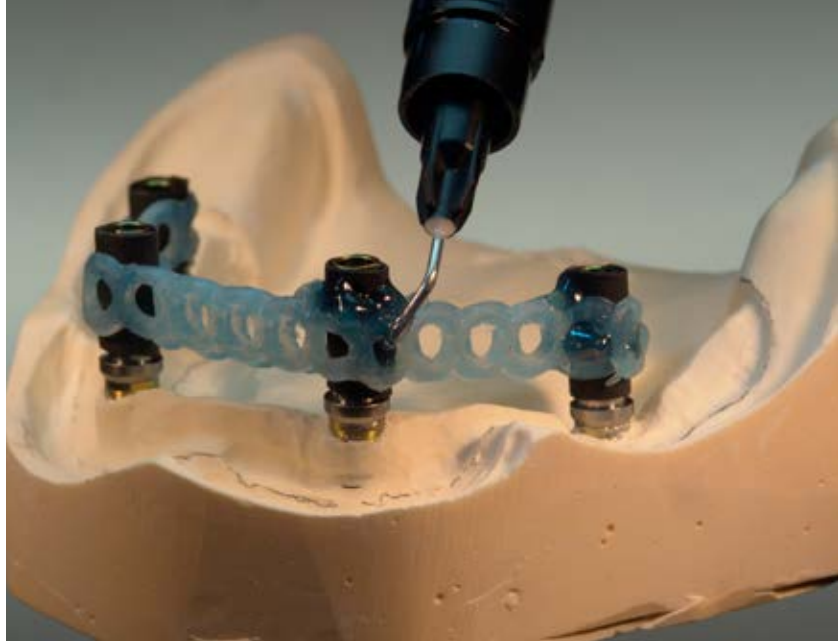


[www.primotecusa.com](http://www.primotecusa.com)




## advantages

- ready to use, one component material from the syringe
- burns out cleanly and completely
- very good and precise modeling characteristics
- connects directly to the light cured Metacon wax
- is processed "cold" – no danger of thermal tension when connecting Metacon segments
- no separator needed on zirconium, metal or porcelain surfaces
- no danger of "melting through" on the block-out or relief wax (in case of partials)
- long working time (> 20 min.), short light curing time (< 5 min.)
- absolutely precise after polymerisation – no noticeable shrinkage or distortion
- secondary parts can be lifted off without any problem
- easy to grind with conventional carbide burs or universal rubber polishers



## ORDERING INFO

Item #	Item	Price
MB100	 <p><b>metablue</b> light cured Metacon System modeling composite, 4 syringes at 3 g / each, 12 hollow needle tips</p>	\$ 89.00

## quick modeling directly from the syringe

with metablue the metacon system becomes even easier in handling with even more perfect results



Primotec USA  
215 Westport Ave.  
Norwalk, CT 06851  
203-682-6429

[info@primotecusa.com](mailto:info@primotecusa.com)  
[www.primotecusa.com](http://www.primotecusa.com)