

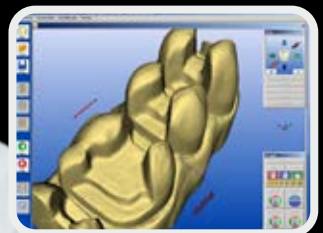
**NO MORE
BROKEN DIES
OR DULL
EDGES**

primopoly

polyurethane model and die material kit

in general polyurethane is the most
accurate, strongest and cleanest
die material on the market.

NO MORE BROKEN DIES OR DULL EDGES





primopoly

uses

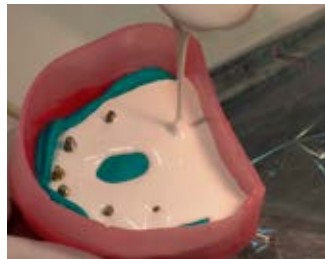
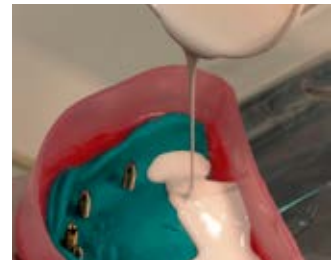
- fabrication of models for long span bridges, superstructures and inlay, onlay preparations
- » excellent for scanning, no scanning spray needed
- shoulder and partial crown preparations
- duplicate dies to make porcelain butt margins
- dies that are very difficult to pour without breaking
- small lower anterior cases
- optimal for grinding on Zirconium because water does not effect the model

advantages

- no noticeable shrinkage or expansion
- more accurate than epoxy
- clean and easy to work with
- absolutely water resistant
- very thin in fluidity and easy to pour
- cures in only 1 hour
- easy to trim and saw, grinds more like a stone and not a plastic
- holds the sharpest edges and flows into the smallest cavities
- models are not as shiny - great for scanning
- three colors available

primopoly

implant model

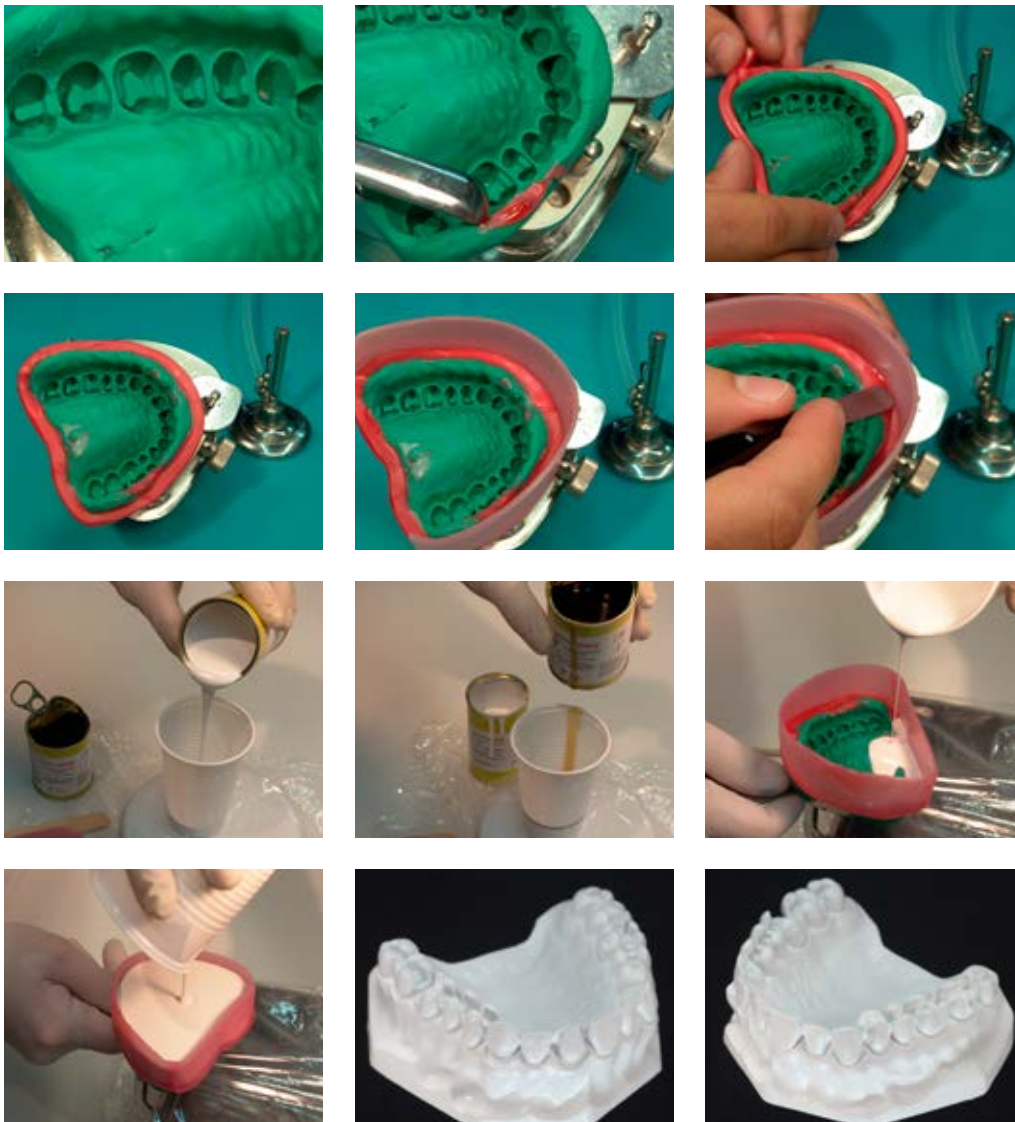


working procedure

Primopoly is a 2 component system, just mix the base material with the hardener and then you're ready to pour.

The Primopoly base material is white. The color can be changed to blue or apricot by adding Primopoly coloring paste (included in the kit).

inlay model





technical tips

For best results measure out base and hardener by weight instead of ml

For polyether and polyvinyl impression materials spray "Primopoly release agent" onto the impression and let it dry. This will prevent any sticking to the impression.


science

Primopoly is a polyurethane die material. In general polyurethane is the most accurate, strongest and cleanest die material on the market; much more so than traditional die stone and epoxy.



EXTREMELY PRECISE AND STRONG DIE MATERIAL

ORDERING INFO

Item #		Item	Price
PY-KIT		primopoly Kit <ul style="list-style-type: none"> · primopoly base: 660 g (3 x 220 g) container, with an empty plastic bottle with lever cap · primopoly hardener: 100 g (1x) container, with an empty glass bottle with a spout · primopoly coloring paste: 8 g · accessories: 4 small and 2 large wooden spatulas, mixing bowls (3 x 30 ml + 1 x 50 ml) · indicate desired color – blue or apricot – when ordering 	\$109.00
PR01		primopoly release agent - 2 oz. Spray bottle	\$15.00

No more broken dies or dull edges

extremely precise and strong die material



Primotec USA
215 Westport Ave.
Norwalk, CT 06851
203-682-6429

info@primotecusa.com
www.primotecusa.com